

**RICHARD  
POLAN**  
ASSOCIATES  
architects

410 727-3549

12239 LONG GREEN PIKE  
GLEN ARM, MD 21057  
[arch@polan.org](mailto:arch@polan.org)

## Project Experience Counts

Attention to detail - - Large & Small

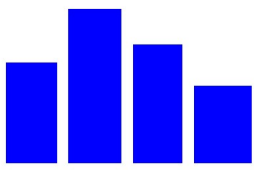


Mr. Polan has construction documentation experience with high-rise buildings. Here is a first-hand example of pleated skylights and zig-zag curtain wall details executed in Cincinnati, Ohio.



In Contrast, Preservation & Adaptive Re-Use are a strong suit @ POLAN.ORG  
This 200-year-old home in Monkton, MD reflects an extensive make-over

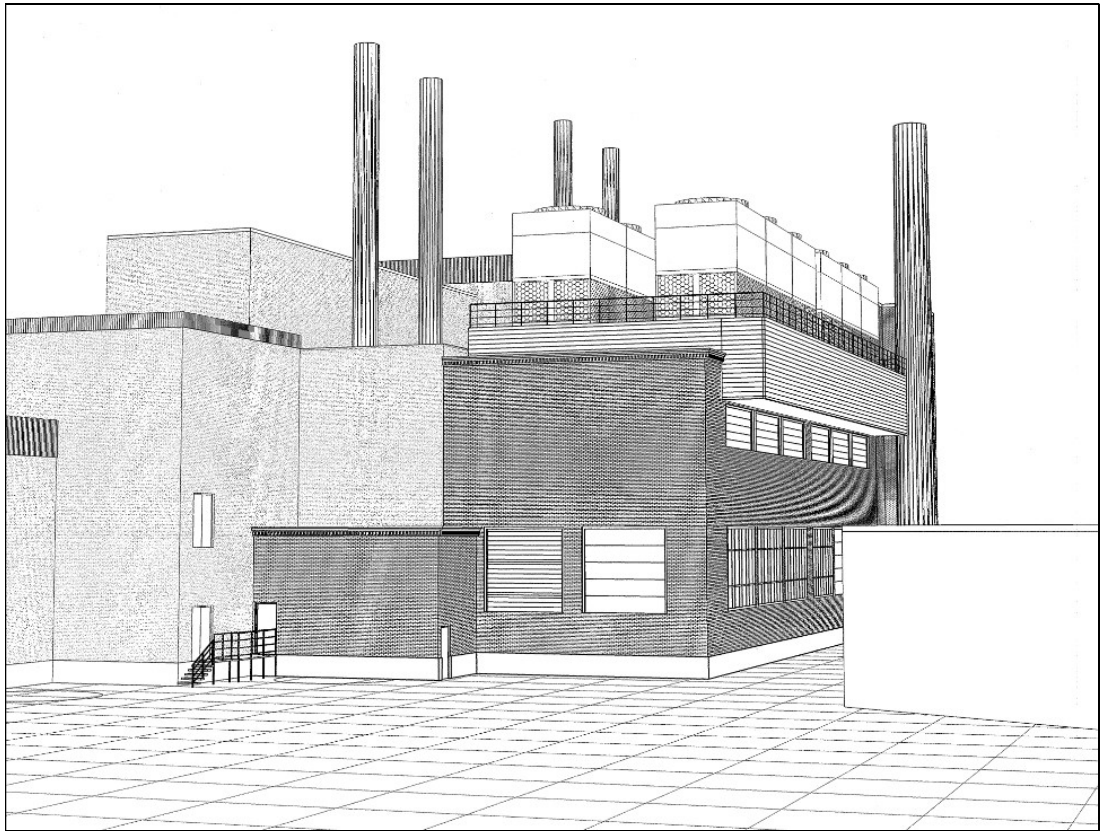




**RICHARD  
POLAN**  
ASSOCIATES  
**architects**

410 727-3549

12239 LONG GREEN PIKE  
GLEN ARM, MD 21057  
arch@polan.org

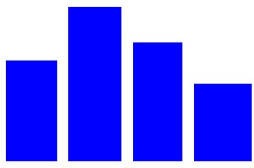


A Co-Generation Plant in Rochester, NY by POLAN.ORG- - From Inception...



... To Project Administration and then Reality





**RICHARD  
POLAN**  
ASSOCIATES  
**architects**

410 727-3549

12239 LONG GREEN PIKE  
GLEN ARM, MD 21057  
[arch@polan.org](mailto:arch@polan.org)

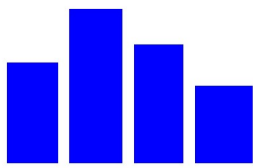


From a Boiler Plant / Chiller Plant Expansion @ George Mason University



To Custom Residential Projects - - Reliable Project Architecture at [POLAN.ORG](http://POLAN.ORG)





**RICHARD  
POLAN**  
ASSOCIATES  
architects

410 727-3549

12239 LONG GREEN PIKE  
GLEN ARM, MD 21057  
arch@polan.org



At POLAN.ORG, we have successfully completed 44 Walgreens projects



No challenge is too great or too small...